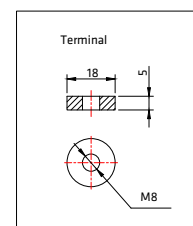
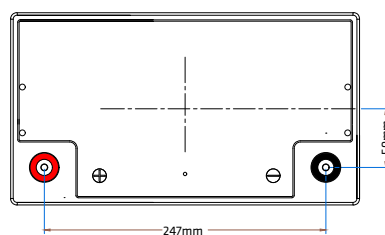
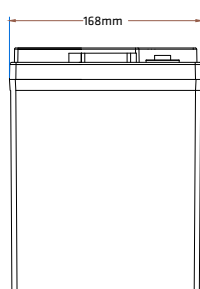
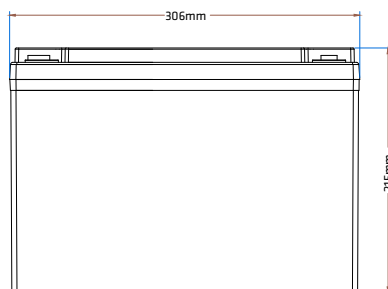


ZGEL120185**CHARACTERISTIC / CARATTERISTICHE**

| | | |
|---|------------------------|--|
| Volt | | 12V |
| Capacity / Capacità | 20h | 90Ah |
| | 5h | 80Ah |
| | 3h | 73Ah |
| | 2h | 70Ah |
| Charge temperature / Temperatura di carica | | -10°C / +50°C |
| Discharge temperature / Temperatura di scarica | | -40°C / 50°C |
| Capacity affected by Temperature / Effetti della temperatura sulla capacità | 40°C | 106% |
| | 25°C | 100% |
| | 0°C | 80% |
| Expected Life Cycles affected by temperature / Effetti della temperatura sui cicli di vita attesi | 40°C | 60% |
| | 20°C | 100% |
| | 0°C | 120% |
| Self-Discharge 25°C Capacity / Autoscarica a 25°C | after 3 month storage | 90% |
| | after 6 month storage | 80% |
| | after 12 month storage | 62% |
| Charge cycle / Ciclo di carica | IU + h | "In" max. 42Amp; "V1" 2.40V/cell |
| | IUIa | "In" max. 42Amp; "V1" 14.1Volt; "If" 2Amp. |

CHARACTERISTIC / CARATTERISTICHE

| | | |
|--|---------|-----------|
| Battery dimensions / Dimensioni batteria | | |
| L/L | W/P | MAX - H/A |
| 306 | 168 | 215 |
| Box Dimensions / Dimensioni scatola | | |
| L/L | W/P | H/A |
| - | - | - |
| USA Group | 27 | |
| Weight / Peso | 27,7 Kg | |
| Terminal / Terminali | M8 | |
| Case / Contenitore | ABS | |
| Pallet Qt | 36 | |



This information is generally descriptive only and is not intended to make or imply any representation, guarantee or warranty with respect to any cells and batteries. Cell and battery designs/specifications are subject to modification without notice. Contact U.B.S. UNION BATTERY SERVICE for the latest information.

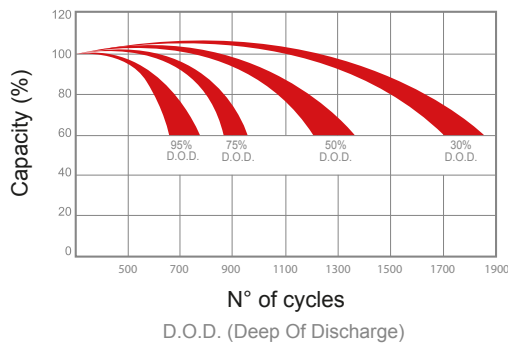
Le informazioni contenute in questa scheda tecnica sono solo descrittive e indicative, non sono una garanzia. U.B.S. UNION BATTERY SERVICE si riserva il diritto di aggiornarle/modificarle senza preavviso.



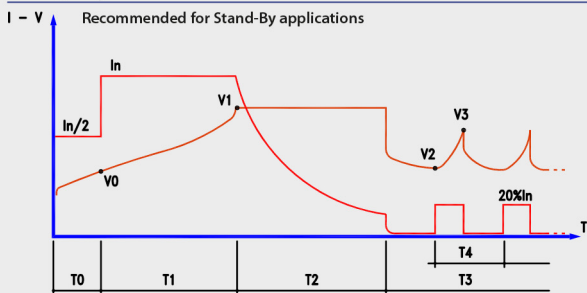
ZGEL120185



Charge cycles (20°C, discharge 5h)



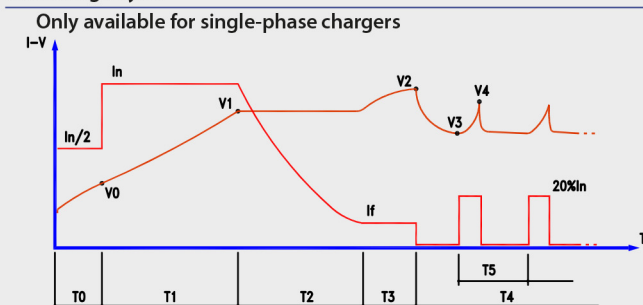
Charge cycle for sealed batteries (GEL/AGM): IU + holding



- I_n = PROGRAMMED CAPACITY/10
- V_0 = 1,90 V/CELL
- V_1 = PROGRAMMED VALUE
- V_2 = 2.10 V/CELL
- V_3 = 2.30 V/CELL
- T_0 = MAX. 1 HR
- T_1 = MAX. 12 HRS
- T_2 = T_1 (MIN. 2-MAX. 5 HRS)
- T_3 = UNLIMITED

“IUla” charge cycle is always recommended in case of more than 2 batteries in series
Ciclo di carica “IUla” è sempre necessario qualora ci siano più di 2 batterie collegate in serie.

IUla charge cycle



- I_n = PROGRAMMED VALUE (CHARGE I)
- I_f = PROGRAMMED VALUE (FINAL I)
- V_0 = 1,90 V/CELL
- V_1 = PROGRAMMED VALUE (THRESHOLD V)
- V_2 = PROGRAMMED VALUE (LOCK V)
- V_3 = 2.10 V/CELL
- V_4 = 2.30 V/CELL
- T_0 = MAX. 1 HR
- T_1 = MAX. 12 HRS
- T_2 = MAX. T_1+6 HRS OR $I = I_f$
- T_3 = MAX. 4 HRS
- T_4 = UNLIMITED
- T_5 = MAX. 6 HRS